



Master's of Education in Mathematics

For secondary teachers

Offered entirely online!



Program Description

Program participants will demonstrate their knowledge through individual and collaborative projects and presentations, field-based curriculum implementation and evaluation, and the use of reflective classroom inquiry. Throughout the program, students will:

- Deepen and broaden mathematical understanding.
- Prepare to teach at the post secondary level, including dual enrollment courses.
- Learn about recent advances in the mathematical sciences.
- Gain insight into the historical, philosophical, psychological, and sociological foundations of mathematics education.
- Further develop competencies in the use of teaching and assessment strategies specific to teaching mathematics.

Contact Information

For information about the application and registration, contact:
Outreach & Engagement
www.jmu.edu/outreach
540.568.4253
outreach@jmu.edu

Department of Middle, Secondary & Mathematics Education
Phone: 540.568.6486
Fax: 540.568.4550

Department of Mathematics & Statistics
Contact: Anthony Tongen
tongen@jmu.edu
Phone: 540.568.7328
Fax: 540.568.6857



facebook.com/jmuoutreach



[@JMUOutreach](https://twitter.com/JMUOutreach)



[JMUOutreach](https://www.instagram.com/JMUOutreach)

James Madison University
www.jmu.edu/outreach

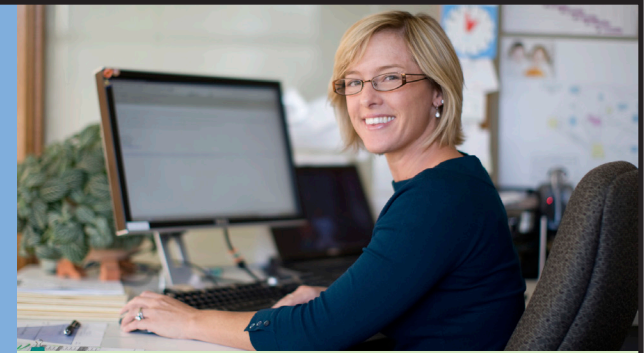


JMU
OUTREACH & ENGAGEMENT

Description

The Master of Education (M. Ed.) in mathematics prepares high school teachers for positions of instructional leadership as master teachers of mathematics. The program extends the professional competence of high school mathematics teachers through an in-depth study of mathematics and mathematics teaching and learning. Program participants will demonstrate their knowledge through an innovative, completely online curriculum.

The M. Ed. in mathematics is a collaborative effort of the College of Education and the Department of Mathematics and Statistics that is designed to provide opportunities for mathematics teachers to deepen their understanding of mathematics by learning advanced mathematical topics in relation to the mathematics they actually teach. The program will also help prepare teachers to teach advanced secondary mathematics courses, such as Advanced Placement calculus or statistics. The education courses will provide opportunities for teachers to better understand technologies for learning and how to continue to develop as a professional educator. The M. Ed. is designed to develop teachers' understanding of and ability to apply education research within their own practice. The M. Ed. content is consistent with the recommendations of the Mathematical Education of Teachers' report of the Conference Board of the Mathematical Sciences.



To Apply

To apply to the Master of Education in Mathematics:

Admission requirements to the Master of Education in Mathematics include the submission of:

- Official transcripts reflecting all post-Secondary education.
- An official record of scores on the general test of the Graduate Record Examination (scores must be less than five years old).
- Application for graduate admission along with the nonrefundable application fee of \$55 submitted online at www.jmu.edu/grad

To apply as a non-degree seeking student:

If you're not sure about enrolling in the program right away, you can enroll as a non-degree seeking student:

Go to www.jmu.edu/outreach, and click on "Apply" and choose, "I want to take a JMU class." Submit the non-degree seeking student application, including the course you wish to take, along with a \$20 nonrefundable application fee.



Courses

The Master's of Education in mathematics includes a minimum of 34 credit hours of course work, which are organized with 13 hours of educational development and 21 hours of mathematics.

All course work for this program is offered online.

Degree Requirements

Course Requirements	Credit Hours
EDUC 630: Inquiry in Education	3
EDUC 631: Seminar in Educational Inquiry	1
EDUC 641: Learning Theories and Instructional Models	3
EDUC 642: Curriculum Theory and Issues	3
LTLE 570: Design and Development of Digital Media	3
MATH 510: Analysis for Teachers	3
MATH 512: Discrete Mathematics for Teachers	3
MATH 514: Algebra for Teachers	3
MATH 520: Geometry for Teachers	3
MATH 615: History of Mathematics	3
MATH 617: Probability and Statistics for Teachers I	3
MATH 618: Probability and Statistics for Teachers II	3
Total Credit Hours	34